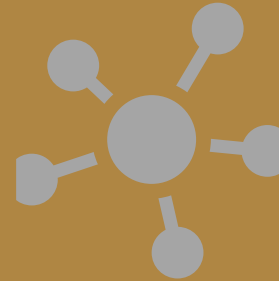


# Your Journey to Leadership

- 
- Across the entire organization
    - With all Stakeholders
    - All formats
    - 1on1 to large groups

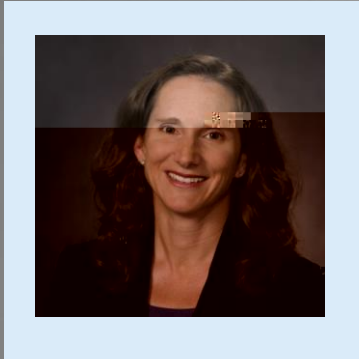
- 
- Market facing
  - Competitors
  - Advantages
  - Why, When & Where, NOT How
- 



- 
- Beyond the engineering team
  - Building Networks
  - Competitors
  - Regulators & Policy

- 
- Continuous learning
-

# Network with Today's Coaches



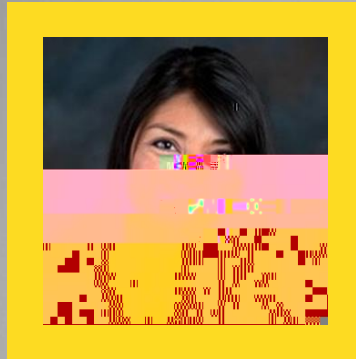
Jennifer  
Didlo

Vice President, Market  
Business Leader  
(retired)

The AES Corporation

Cal Poly SLO: BSME  
CSULB: MSME

<https://www.linkedin.com/in/jennifer-didlo-7aa39011/>



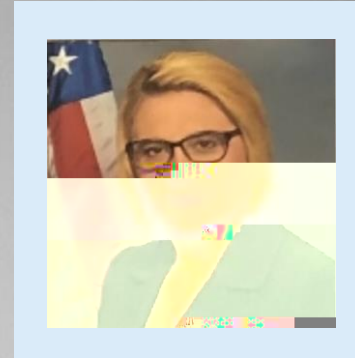
Delilah  
Nuñez

Systems Director,  
Advanced Ground  
Systems

The Aerospace  
Corporation

BS Computer  
Engineering, MBA

<https://www.linkedin.com/in/dellah-nunez-5860b684/>



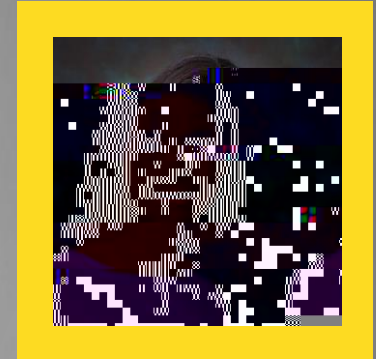
Mozhdeh  
Najafabadi

Deputy Division Chief  
Acquisition Delta-Strategic  
SATCOM

Space Systems Command  
Department of Space Force

USC, Viterbi School of Eng.  
MS – ME, EE, Electronics &  
Communications

<https://www.linkedin.com/in/mozhdeh-najafabadi-453403238/>



Christina  
Luna Bravo

Program Director

Northrop Grumman

UC Santa Barbara  
BS ME  
USC, MSME

<https://www.linkedin.com/in/christina-luna-bravo-aaa8565/>

## Post Event Survey

We want your feedback!

[https://whova.com/portal/survey/beach1\\_202403/35336/?token=06cc683b2c88267c4df1dccbd2a794a05df68a200add651b525e42e679dd5293](https://whova.com/portal/survey/beach1_202403/35336/?token=06cc683b2c88267c4df1dccbd2a794a05df68a200add651b525e42e679dd5293)



## Connect with speakers on Whova App & LinkedIn

Introduce yourself & exchange information, ask questions.

Become a member of 100+ Women Strong  
<https://www.csulb.edu/college-of-engineering/100-women-strong-steering-committee>

Connect with us on Linked In